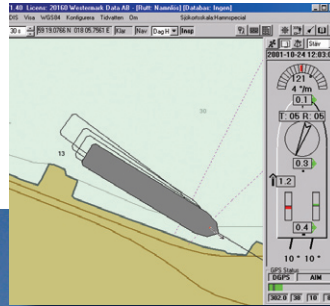
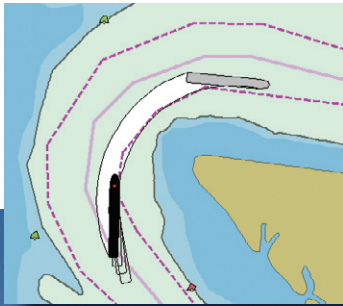


Type approved ECDIS-4000 from ADVETO

– designed for safe and professional ECDIS navigation in the critical and complex waters of the Scandinavian archipelagoes



- Based on the well proven and across the world widely renowned ADVETO AECDIS system
- Superior navigation capability including our unique "predictor"
- User friendly system equipped with our control unit for quick, simple and easy manoeuvrability
- Presents easily the new "free chart format" S-63 acquired directly from the source (PRIMAR) with an opportunity to receive electronic charts with less administration and reduced costs

ADVETO
ADVANCED TECHNOLOGY AB

– world class systems for precision navigation
and vessel monitoring with electronic charts

Adveto ECDIS-4000 functions

	Extended model	Standard model	Base model
General			
Type approved for ECDIS	●	●	●
Advetos Control Unit	●	●	Optional
Number of "views" - individual presentation	4	2	1
Geodetical module for datum conversions	●	●	WGS-84 only
Database – Microsoft Office compatible	●	●	
Advetos "Compact VDR" – includes replay	●	●	
Charts			
Presentation of S-57 data	●	●	●
Presentation of PRIMAR charts in S-63	●	●	●
Presentation of Chartworld global charts	●	●	●
Terrestrial Globe (for superb overview)	●	●	●
Nautical functions			
"Docking" = Harbour manouver	●		
Advetos Predictor with "swept area"	●	●	
Shadow ship function	●		
Routes			
Routes – MS Office/Access compatible	●	●	●
Legs and turns with individual radius	●	●	●
Multiroute-module	●	●	
Sensors			
EPFS 1 (DGPS 1)	●	●	●
EPFS 2 (DGPS 2)	●	●	●
Compass 1 (Gyro 1)	●	●	●
Compass 2 (Gyro 2)	●	●	●
Speed log	●	●	●
AIS (also text messages)	●	●	●
Radar	●	●	●
Echosounder input	●		
Windmeter input	●		

The Swedish company Adveto in Stockholm-Spånga offers the world market complete digital systems for precision navigation of professional vessels with ECDIS and ENCs (official Electronic Nautical Charts). Our user-friendly and safe world class systems are developed in Sweden based on, among other things, the special conditions for navigation in the complex and critical waters of the widespread Scandinavian archipelagoes.

World wide usage of Adveto system

Adveto systems are already used all across the world in and around all continents by work boats, tow boats, ferries and ocean-crossing cruise-liners, pilot boats, skerry boats and training ships.

The majority of our users are still found in Scandinavia but with a rapidly growing number of users around the world. In addition to the National Maritime Administrations in Sweden, Norway and Denmark, the corresponding bodies in Poland, Spain and Argentina are also Adveto users and so are customers in the harbour of Hong Kong and in Mexico – all countries with significant coast lines.

World pioneers with commercial AIS solutions

Adveto started in 1987 and understood the benefits of AIS at an early stage. Already in 1993 we were the first company to produce

AIS software for commercial use. One of our first customers was the Swedish Maritime Administration. Since then we have frequently added a number of new functions that can be connected to Adveto's type approved system for precision navigation with official ENCs.

Complete and safe systems with after-sales support

Our complete systems include hardware, software, NAV computers, DGPS and control units. We take the responsibility for installation and training directly or via our representatives. To maximise our customers' availability of our systems we also give a professional and comprehensive after-sales support and service. Adveto clients are close partners in our efforts to constantly improve our solutions.

ADVETO AB

Box 8028, SE-163 08 Spånga (Stockholm), Sweden

Tel +46 8 36 69 05 • Fax +46 8 36 18 85

mail@adveto.se

www.adveto.com



*– world class systems for precision navigation
and vessel monitoring with electronic charts*